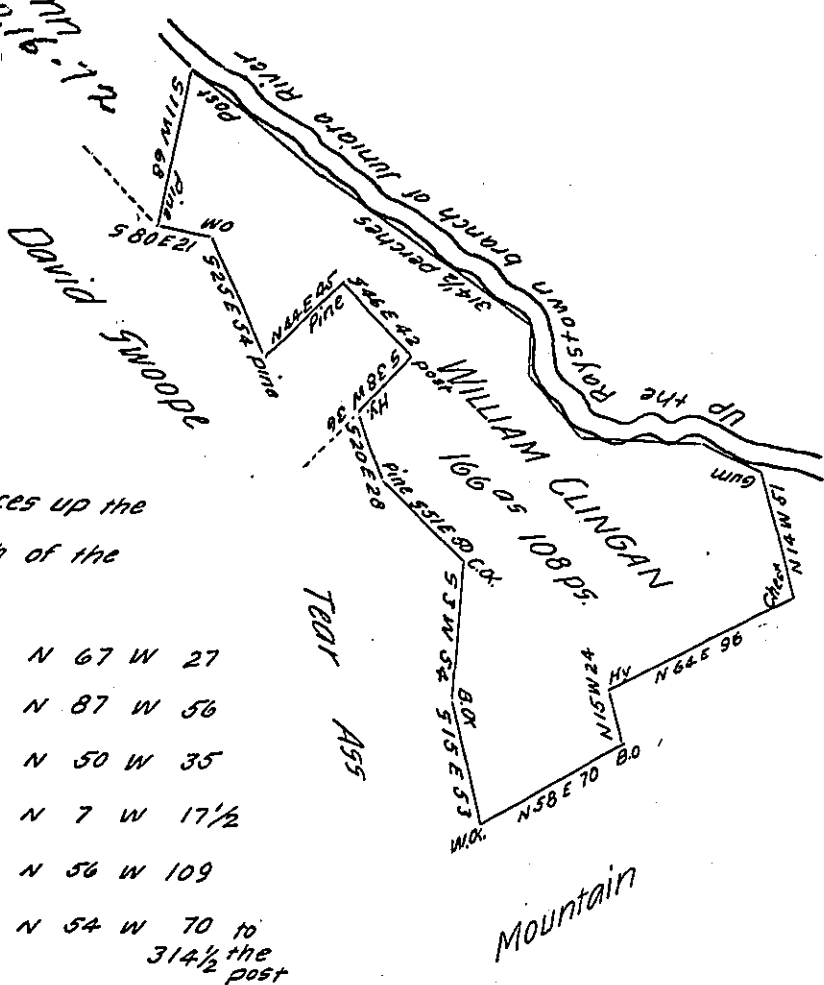


William DUMP  
C-216-72



Courses & Distances up the  
Raystown branch of the  
Juniata River

- From the Gum N 67 W 27
- N 87 W 56
- N 50 W 35
- N 7 W 17 1/2
- N 56 W 109
- N 54 W 70 to  
31 1/2 the  
post

In pursuance of a Warrant dated the 3<sup>d</sup> day of November 1762  
 Surveyed the 2<sup>d</sup> day of May 1794 to William Clingan the above described  
 tract of land Situate on the Raystown branch of Juniata River in Hopewell  
 township Huntingdon County containing one hundred and sixty six acres  
 and one hundred and eight perches and the allowance of Six  $\frac{1}{2}$  Cent for  
 Roads &c.

John Canan D.S.

Daniel Brodhead Esq<sup>r</sup>  
Surveyor General

IN TESTIMONY that the above is a copy of the original remaining on file in  
 the Department of Internal Affairs of Pennsylvania, made  
 conformably to an Act of Assembly approved the 16th day of  
 February, 1833, I have hereunto set my Hand and caused  
 the Seal of said Department to be affixed at Harrisburg,  
 this thirteenth day of June 1904

*Loae P. Brown*  
 Secretary of Internal Affairs.